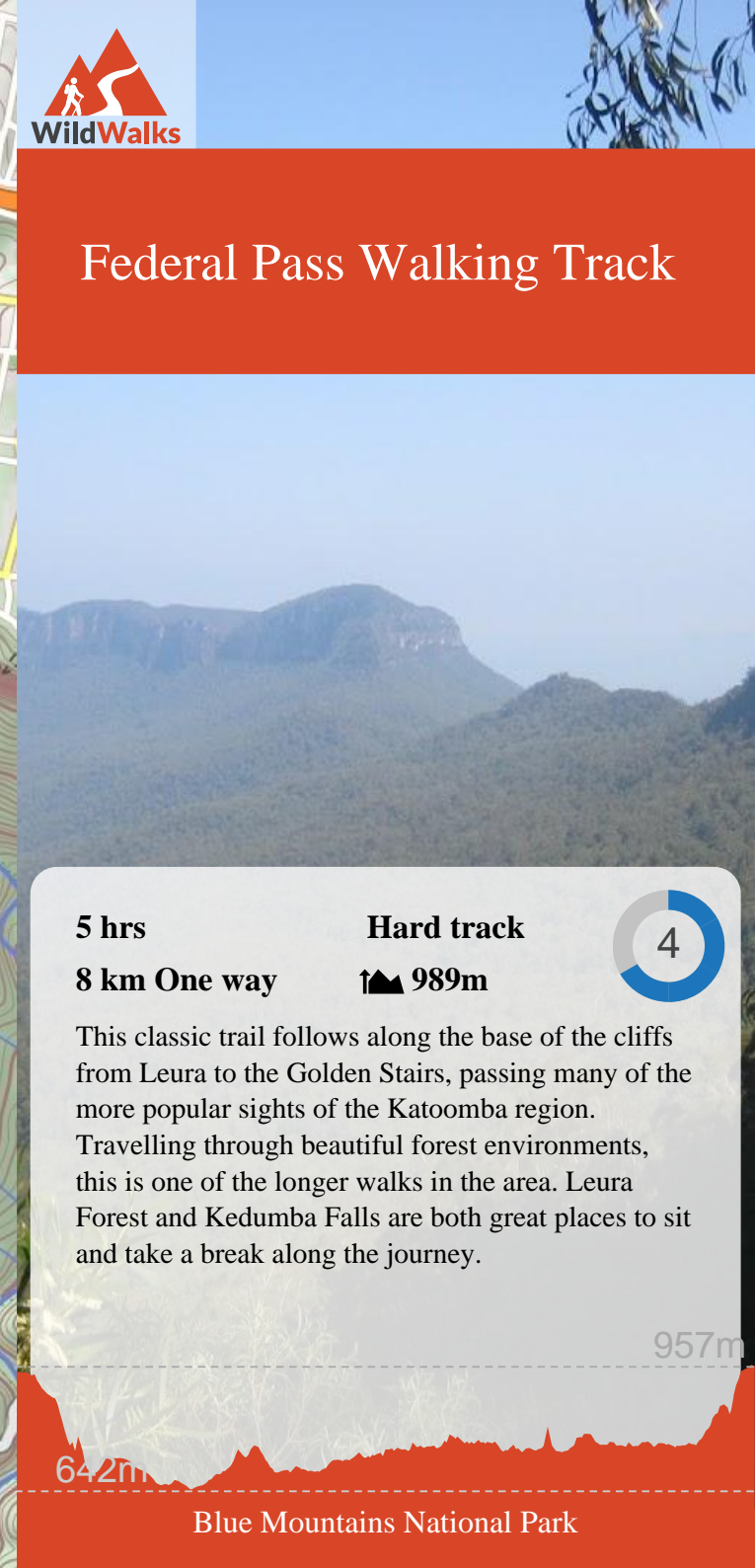
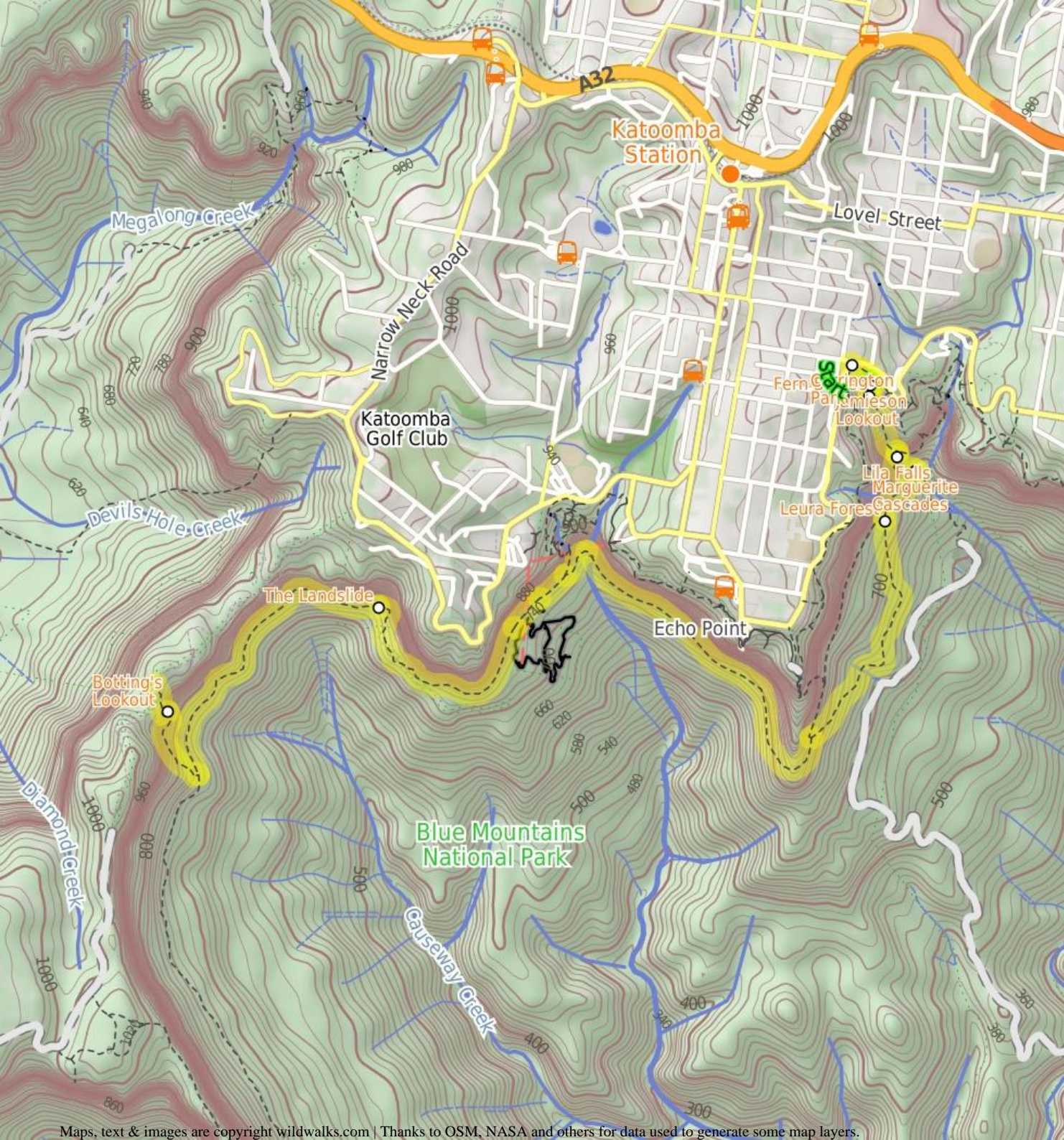


Federal Pass Walking Track



5 hrs

8 km One way

Hard track

▲ 989m

4

This classic trail follows along the base of the cliffs from Leura to the Golden Stairs, passing many of the more popular sights of the Katoomba region. Travelling through beautiful forest environments, this is one of the longer walks in the area. Leura Forest and Kedumba Falls are both great places to sit and take a break along the journey.

642m

957m

Blue Mountains National Park

Carrington Park

Carrington Park is a medium-sized park on a traffic island, at the junction of Cliff Road and Merriwa St, Katoomba. The park is partially fenced and has a picnic shelter, picnic tables, garbage bins and children's play equipment.

Jamieson Lookout

Jamieson Lookout is a fenced lookout at the east end of the Federal Pass track, and just off Prince Henry Cliff Walk. The lookout has a bench seat and provides great views up the Jamison Valley, along Kings Tableland escarpment and past Mount Solitary. The lookout is perched up on a large rock buttress, giving views unobscured by trees.

Fern Bower

Fern Bower is an especially pleasant part of the Blue Mountains National Park, protected from heat and providing a great environment for fern trees, bracken ferns and moss to thrive. Fern Bower is a signposted area along the Federal Pass walking track, just below Jamieson Lookout and next to Linda Creek. This is a nice place to stop, rest and enjoy the bird noises.

Lila Falls

Lila Falls is a thin waterfall on Linda Creek. The Federal Pass crosses the creek (on a bridge) in front of these falls, just below the intersection with the amphitheatre. The waterfall is not the most spectacular one in this valley, but it is a nice cool spot to catch your breath.

Marguerite Cascades

Marguerite Cascades are a series of small cascades finishing with a taller waterfall of a few metres height, dropping into a shallow sandy pool. The cascades are on Linda Creek and a small bridge crosses the creek at the base of the falls as part of the Federal Pass walking track. The cascades are a nice place to sit and listen to the water running and the local birds in this cool shady area.

Leura Forest

Leura Forest is a great picnic area in the Jamison Valley at the junction of the Federal Pass and Dardenelles Tracks. This place was home to a popular tea house (also known as 'Lady Carrington Dining Hall') from the late 1800's. Today walkers can still enjoy the historic rotunda and the foundations of the original tea house. The picnic area provides a great rest spot under the shade of the lilli pilli and coachwood forest.

Before You walk

Bushwalking is fun and a wonderful way to enjoy our natural places. Sometimes things go bad, with a bit of planning you can increase your chance of having an enjoyable and safer walk. Before setting off on your walk check

- 1) Weather Forecast ([BOM Central Tablelands District](#))
- 2) Fire Dangers ([Greater Sydney Region](#))
- 3) Park Alerts ([Blue Mountains National Park](#))
- 4) Research the walk to check your party has the skills, fitness and equipment required
- 5) Agree to stay as a group and not leave anyone to walk solo

Think before you TREK

The 'Think before you TREK' program developed by NSW Police & NPWS promotes the benefits of planning ahead for your bushwalking trip by using an easy to remember acronym:

- T** Take adequate supplies of food, water, navigation and first aid equipment.
- R** Register your planned route and tell friends and family when you expect to return.
- E** Emergency beacon (PLB's) should be carried on walks with significant gaps in mobile coverage (check terrain profile).
- K** Keep to your planned route and follow the map and walking trails.

Topo Maps

The maps provided on wildwalks are helpful, but there are times where you may need maps covering a broader area. Maps that cover this walk include;

- 1:50 000 Map Series:**Six Foot Track
1:25 000 Map Series:89301S KATOOMBA
1:100 000 Map Series:8930 KATOOMBA

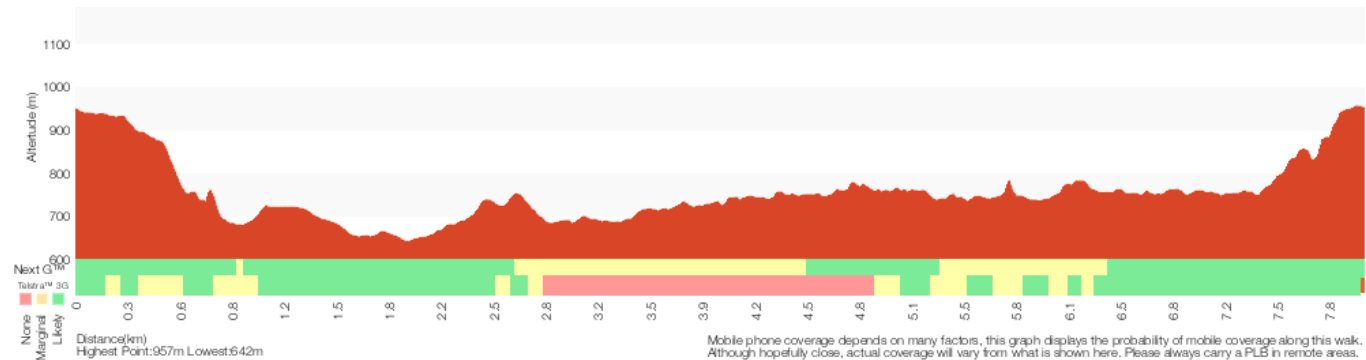
Grade

This walk has been graded using the AS 2156.1-2001. The overall grade of the walk is determined by the highest classification along the whole track.



Grade 4/6
Hard track

Length	8 km One way
Time	5 hrs
Quality of track	Rough track, where fallen trees and other obstacles are likely (4/6)
Signs	Directional signs along the way (3/6)
Experience Required	Some bushwalking experience recommended (3/6)
Weather	Weather generally has little impact on safety (1/6)
Infrastructure	Limited facilities, not all cliffs are fenced (3/6)



Are you ready to have fun?

Please ensure you and your group are well prepared and equipped for all possible hazards and delays. Check park closures, weather information and Fire Danger Rating before setting out. Optional side trips and alternate routes noted are not included in this walk overall grade, length or time estimate. Please allow extra time for resting and exploring areas of interest. The authors, staff and owners of wildwalks take care in preparing this information but will not accept responsibility for any inconvenience, loss or injury you may experience. Please take care, have fun - Happy Walking.

Getting there You can get to Carrington Park (gps: -33.7202, 150.3174) by car or bus. Car: There is free parking available.

Traveling by car is the only practical way to get back from Golden Stairs Track carpark (gps: -33.7343, 150.2824). Car: There is free parking available.

Find up to date and more information including; travel directions, weather, park closures and walker feedback at <http://wild.tl/fpw/>

0 | Carrington Park

Carrington Park is a medium-sized park on a traffic island, at the junction of Cliff Road and Merriwa St, Katoomba. The park is partially fenced and has a picnic shelter, picnic tables, garbage bins and children's play equipment.

0 | Carrington Park

(230 m 5 mins) From Carrington Park, the walk crosses Cliff Drive and goes down the stairs and past the sign for 'Blue Mountains National Park'. The walk continues down the stairs until reaching an intersection signposted with the way to 'Echo Point' or 'Leura Cascades'.

Turn left: From the intersection, this walk follows the 'Leura Cascades 1km' sign down the wooden steps and along the bush track, winding through the forest until coming to the signposted intersection of the 'Leura Forest' Track.

Turn right: From the intersection, this walk follows the 'Leura Forest' sign along the bush track, winding down the hill for a short while before dropping down a set of wooden steps, to the signposted intersection with the 'Jamieson Lookout' track.

0.23 | Optional sidetrip to Jamieson Lookout

(20 m 1 mins) Turn sharp left: From the intersection, this walk follows the 'Jamieson Lookout' sign along the short bush track to the rock shelf at the Jamieson Lookout. At the end of this side trip, retrace your steps back to the main walk then Veer left.

0.23 | Jamieson Lookout

Jamieson Lookout is a fenced lookout at the east end of the Federal Pass track, and just off Prince Henry Cliff Walk. The lookout has a bench seat and provides great views up the Jamison Valley, along Kings Tableland escarpment and past Mount Solitary. The lookout is perched up on a large rock buttress, giving views unobscured by trees.

0.23 | Int of Federal Pass and Jamieson Lookout Tracks

(90 m 3 mins) Continue straight: From the intersection, this walk follows the dirt path, heading down the long set of wooden and rocky steps. The walk winds down past a picnic chair under a cliff overhang, and continues down the steps into the valley and through the forest to the Fern Bower information sign.

0.32 | Fern Bower

Fern Bower is an especially pleasant part of the Blue Mountains National Park, protected from heat and providing a great environment for fern trees, bracken ferns and moss to thrive. Fern Bower is a signposted area along the Federal Pass walking track, just below Jamieson Lookout and next to Linda

Creek. This is a nice place to stop, rest and enjoy the bird noises.

0.32 | Fern Bower

(320 m 13 mins) Continue straight: From the information sign, the walk follows the track down the steps, passing a 'Rich History' information sign before coming down to the signposted intersection with the Amphitheatre track, at the top of a metal staircase.

0.64 | Int of Federal Pass and the Amphitheatre track

(20 m 1 mins) Turn right: From the intersection, this walk follows the 'Federal Pass Leura Forest' sign down the long metal staircase, to cross the bridge over Linda Creek in front of Lila Falls.

0.66 | Lila Falls

Lila Falls is a thin waterfall on Linda Creek. The Federal Pass crosses the creek (on a bridge) in front of these falls, just below the intersection with the amphitheatre. The waterfall is not the most spectacular one in this valley, but it is a nice cool spot to catch your breath.

0.66 | Lila Falls crossing

(180 m 11 mins) Continue straight: From the Lila Falls, this walk follows the track heading down the hill, winding down a wooden walkway keeping the creek to the left. The track hugs the rock wall and passes under a shallow overhang. The walk continues down a staircase, then turns back down into the gully where it come to the taller and slender Linda Falls. After passing Linda Falls the walk follows the wooden steps down through the gully, crossing the creek again before heading down to the Marguerite Cascades.

0.84 | Marguerite Cascades

Marguerite Cascades are a series of small cascades finishing with a taller waterfall of a few metres height, dropping into a shallow sandy pool. The cascades are on Linda Creek and a small bridge crosses the creek at the base of the falls as part of the Federal Pass walking track. The cascades are a nice place to sit and listen to the water running and the local birds in this cool shady area.

0.84 | Marguerite Cascades

(320 m 11 mins) Continue straight: From the 'Marguerite Cascades', this walk follows the timber steps downhill, winding steeply for a short while until coming to an intersection with a faint track, marked with a timber 'Federal Pass' sign, just beside a foot bridge.

Veer right: From the intersection, this walk crosses Linda Creek just below a pleasant cascade using the foot bridge with a handrail. This walk then continues along the bush track that winds along the valley floor, to the signposted 'Leura Forest'. From here, the walk continues along the wide bush track, passing a few picnic tables, and winding through the forest to an open area with a large gazebo and an information sign at the intersection of the Federal Pass and the Dardenelles tracks.

1.16 | Leura Forest

Leura Forest is a great picnic area in the Jamison Valley at the junction of the Federal Pass and Dardenelles Tracks. This place was home to a popular tea house (also known as 'Lady Carrington Dining Hall') from the late 1800's. Today walkers can still enjoy the historic rotunda and the foundations of the original tea house. The picnic area provides a great rest spot under the shade of the lilli pilli and coachwood forest.

1.16 | Leura Forest (Int of Federal Pass and Dardenelles

(1.3 km 36 mins) Continue straight: From Leura Forest, the walk follows the 'Federal Pass' sign towards 'Scenic Railway'. Shortly after crossing a small creek using a little bridge, the track begins to steadily go downhill then

flatten out. The environment surrounding the bush track at this point is quite dense and, while very pretty, it is difficult to see views of the surrounding area, although there are occasional glimpses of Sublime Point Service Trail on the left. After a while, the track begins to steadily climb to a signposted intersection with 'Dardenelles Pass'. There are several signposts and a bench seat.

2.44 | Int of Federal Pass, Scenic Railway and Dardenelle

(2.1 km 1 hr 1 mins) Veer left: From the intersection, the walk follows the 'Federal Pass' sign towards 'Scenic Railway', keeping the main cliffs on the right. Not long after the intersection, the track passes 'under the sisters' rock formation (signposted). From here, the track turns and continues along a relatively stretch and, at several points, passes some notable rock formations and caves embedded in the cliffs. There are occasional good views that are not shrouded by the trees. The walk continues until coming to the base of Katoomba Falls, crossing these using a metal bridge know as 'Cooks Crossing'. (Just across the bridge, there is a picnic table.)

Continue straight: From the intersection, this walk heads south-west away from Katoomba Falls along the bush track, soon passing the signposted 'Turpentine Tree'. Shortly after this tree, the track comes to an intersection with another bush track and set of stairs (on the right, signposted as 'Furber Steps').

Continue straight: From the bottom of Furber Steps, this walk follows the 'To base of scenic railway' sign keeping the handrail on the left, and following the flat bush track. This track passes through a small gate over a metal bridge at the bottom of the Scenic Railway.

4.5 | Scenic Railway (Bottom Platform)

(1.3 km 46 mins) Continue straight: From the bridge over the bottom of the Scenic Railway, this walk follows the signs to 'scenic walkway', passing a replica of a mining cart, as well as an old mine. Just past this, the walk comes to a pipeline that runs down the hill collecting fresh water, signposted as drinkable. Continuing past the old mine shafts along the boardwalk, this walk comes to an intersection with a bush track going slightly off to the right. This is signposted as the way to the Landslide.

Continue straight: From the intersection, the walk follows the wide track and signposts towards the 'landslide' (keeping the cliffs on the right). The walk winds along a bush track with small boulders strewn along it. There are a number of old mine shafts just off the track and some interesting historical items. The track continues under Malaita Point before breaking out of the vegetation to a worthy view of the valley, just before the landslide. As the track comes to the old landslide site, it become rougher with plenty of boulders over the track. There are also excellent views of the cliffs above and the landslide as the vegetation is quite sparse here.

5.84 | The Landslide

'The Landslide' is a large rockfall going into the valley approximately 100m. There is a good vantage point for the landslide from under the cliffs to the east, and a great but more distant view from Narrow Neck lookout. The landslide occurred in 1931 after a few days of rumbling. There has been much debate as to whether this event was helped along by erosion and coal mining in the area at the time.

5.84 | Landslide

(1.6 km 42 mins) Continue straight: From the eastern side of the Landslide, the walk heads across the face of the landslide (keeping the cliff on the right). At this point, the track is quite rough, with frequent boulders making it a slight scramble. On the other side of the landslide, the track narrows and becomes a flat bush track that follows the base of the cliffs. The surrounding trees become quite dense again, adding quite an ambiance to the area. The walk heads along the bottom of the Narrow Neck escarpment, until coming to

an intersection with a set of stairs off to the right, signposted as the 'Golden Staircase'.

7.39 | Bottom of Golden Staircase

(430 m 19 mins) Turn right: From the intersection, this walk follows the 'Golden Stairs car park' sign uphill past the termite mound then past the 'Warning - Sections of the Golden Stairs are unfenced and can be slippery when wet' sign. The walk heads up the broad spur along a narrow track, and before long, starts to climb the first set of rock and metal stairs. After this climb, the track is relatively flat for a little while before another climb up similar stairs. Then the walk makes its way around a gully to the base of a cliff. From here the track is flat for a while, heading between the cliff and the fence for about 100m, (passing a 'Caution Rockfall Hazard' sign) before another, smaller climb, up through a gap in the rock to the fenced and signposted 'Botting's L.O.'.

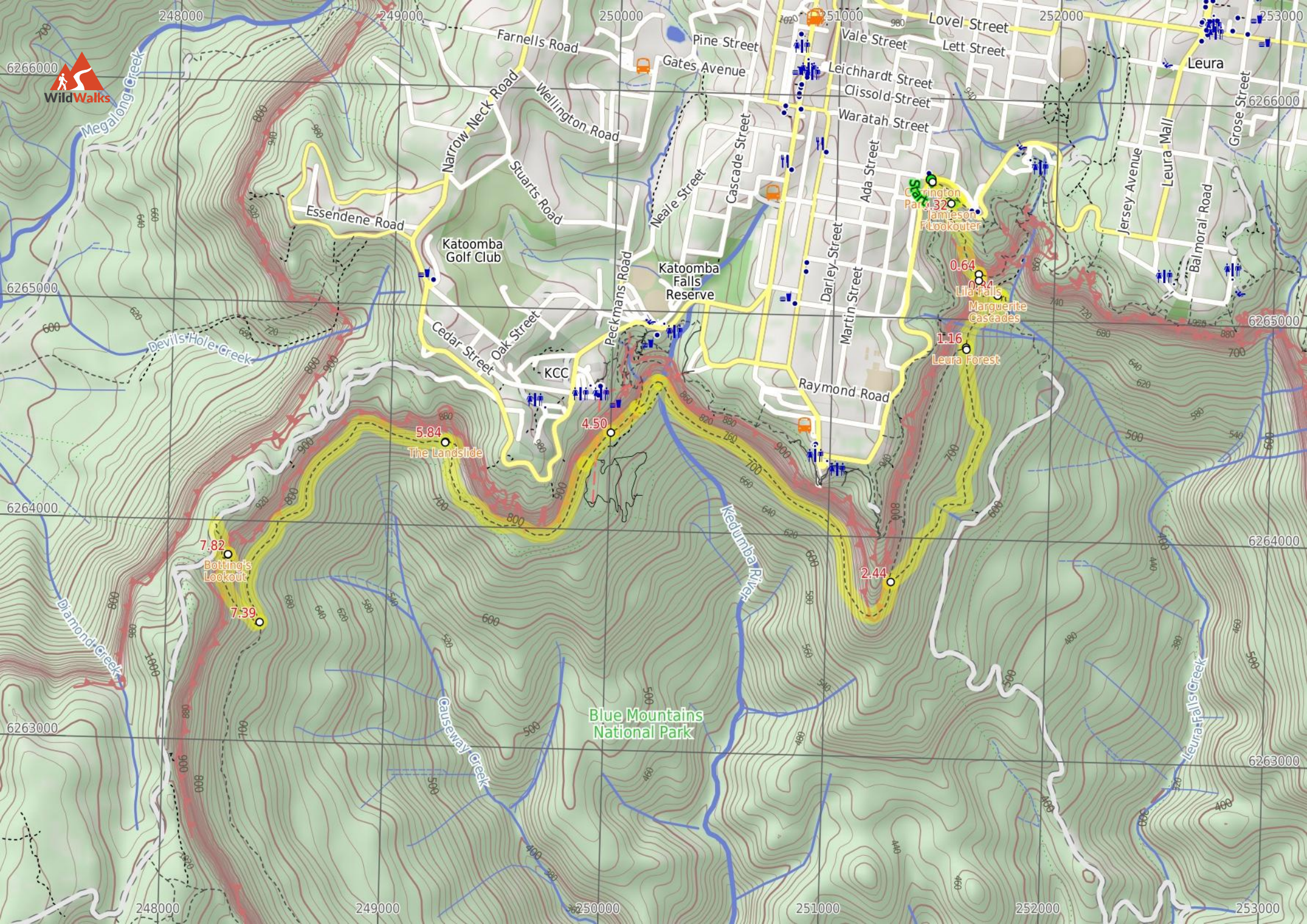
7.82 | Botting's Lookout

Botting's Lookout offers great views over the Jamison Valley and the cliff line, including the Landslide, Malaita Point and the Golden Stairs. A plaque at the lookout states that the lookout was named after Walter Botting (1887-1985), a pioneer trail-maker of the Katoomba District. [More info.](#)

7.82 | Bottings Lookout

(210 m 8 mins) Turn left: From Botting's Lookout, the walk heads up the hill where the track then turns left. The walk continues, steeply in a couple of places, up some eroded sections of track and through a couple of switchbacks. Soon the narrow track mostly flattens out, leading to the signposted 'Golden Stairs' car park on Glenraphael Dr.





Summary navigation sheet for the Federal Pass Walking Track



km	From	Up/Dwn	Length	Initial directions (Use full tracknotes and maps for more detail)
Start	Carrington Park -33.7202,150.3174 (GR Katoomba, 514656)	5 -22	230 m 5 mins	From Carrington Park, the walk crosses Cliff Drive and goes down the stairs and past the sign for 'Blue Mountains National Park'.
0.23	Int of Federal Pass and Jamieson Lookout Tracks -33.721,150.3183 (GR Katoomba, 515655)	0 -6	20 m 1 mins	Optional sidetrip to Jamieson Lookout. Turn sharp left: From the intersection, this walk follows the 'Jamieson Lookout' sign along the short bush track to the rock shelf at the Jamieson Lookout.
0.23	Int of Federal Pass and Jamieson Lookout Tracks -33.721,150.3183 (GR Katoomba, 515656)	0 -36	90 m 3 mins	Continue straight: From the intersection, this walk follows the dirt path, heading down the long set of wooden and rocky steps.
0.32	Fern Bower -33.7217,150.3184 (GR Katoomba, 515655)	10 -150	320 m 13 mins	Continue straight: From the information sign, the walk follows the track down the steps, passing a 'Rich History' information sign before coming down to the signposted intersection with the Amphitheatre track, at th...
0.64	Int of Federal Pass and the Amphitheatre track -33.7241,150.3198 (GR Katoomba, 517652)	0 -18	20 m 1 mins	Turn right: From the intersection, this walk follows the 'Federal Pass Leura Forest' sign down the long metal staircase, to cross the bridge over Linda Creek in front of Lila Falls.
0.66	Lila Falls crossing -33.7243,150.3198 (GR Katoomba, 517652)	37 -90	180 m 11 mins	Continue straight: From the Lila Falls, this walk follows the track heading down the hill, winding down a wooden walkway keeping the creek to the left.
0.84	Marguerite Cascades -33.725,150.3207 (GR Katoomba, 517651)	50 -14	320 m 11 mins	Continue straight: From the 'Marguerite Cascades', this walk follows the timber steps downhill, winding steeply for a short while until coming to an intersection with a faint track, marked with a timber 'Federal Pas...
1.16	Leura Forest (Int of Federal Pass and Dardenelles Tracks) -33.7271,150.3192 (GR Katoomba, 516649)	117 -99	1.3 km 36 mins	Continue straight: From Leura Forest, the walk follows the 'Federal Pass' sign towards 'Scenic Railway'.
2.44	Int of Federal Pass, Scenic Railway and Dardenelles Tracks -33.7367,150.3155 (GR Katoomba, 513638)	210 -196	2.1 km 1 hr 1 mins	Veer left: From the intersection, the walk follows the 'Federal Pass' sign towards 'Scenic Railway', keeping the main cliffs on the right.
4.50	Scenic Railway (Bottom Platform) -33.7306,150.3017 (GR Katoomba, 500644)	175 -178	1.3 km 46 mins	Continue straight: From the bridge over the bottom of the Scenic Railway, this walk follows the signs to 'scenic walkway', passing a replica of a mining cart, as well as an old mine.
5.84	Landslide -33.731,150.2936 (GR Katoomba, 493644)	128 -123	1.6 km 42 mins	Continue straight: From the eastern side of the Landslide, the walk heads across the face of the landslide (keeping the cliff on the right).
7.39	Bottom of Golden Staircase -33.7384,150.2845 (GR Katoomba, 484635)	177 -41	430 m 19 mins	Turn right: From the intersection, this walk follows the 'Golden Stairs car park' sign uphill past the termite mound then past the 'Warning - Sections of the Golden Stairs are unfenced and can be slippery when wet' sign.
7.82	Bottings Lookout -33.7356,150.283 (GR Katoomba, 483638)	80 -9	210 m 8 mins	Turn left: From Botting's Lookout, the walk heads up the hill where the track then turns left.